

Lands • People • Cuisines • Seasons • Traditions  
Languages • Art Forms

Real beauty lies in

**Diversity**

Embrace the **vivid flavours.**  
Celebrate the **experiences of diversity.**





**An ode to  
myriad cultures**  
A soulful date  
with diversity

In the lap of mother earth,  
a space evolves to influence.

Embraced by landscapes and skies,  
a world of purity & peace, arise.

Nurtured by ethnicities and varieties,  
lands of vibrant celebrations thrive.

Fragrant with essence of cultures,  
Simplicity breathes diversity in to lives.

# Magic of diversity under the same skies

From the prolific British literature to Kathakali from Gods own country - Kerala, the worlds is a canvas of cultures, rich and diverse. With over 7100 spoken languages, Planet Earth showcases a melange of cultures, cuisines, temperatures, occupations. All, with their own distinctly enriching lifestyles.

Inspired by such rarity of beauty in diversity lies Diamond 'VILLEGE'. A 500 acre township fashioned along the simplistic, peaceful yet celebrated lifestyles of 6 handpicked cultures.

Global experiences of coveted luxury brands across its exclusive retail showcase, aqua canal, international school & spiritual centre etc., add to this multi-faceted showcase.

Come aboard to



Fill your senses with the  
magical experiences of diversity



Come home to  
where wholesome  
living meets  
global luxuries

#### Project Hallmarks

- Well-planned 500 Bigha, River-touch Community
  - 6 Themed Villages across 400 Bigha
- 100 Bigha International Village with Global Experiences
- 45 Feet Wide Internal Road with Soothing Water Canal alongside
  - Lavish Car Park – 500 Vehicles
- Safe & Secured environment with 24 x 7 Security Systems
  - Merely 20 Kms from Diamond Bourse, Surat

**Six village-themed  
lifestyles**  
one magnificent  
community

Verdant  
**Kerala**

Regale  
**Kutch**

Eclectic  
**Goa**

Regale  
**Marwar**

Enticing  
**Britain**

Ornamental  
**Greece**

# Developers



Architect







**Experience**  
**diversity of cultures**  
amidst themed  
settings

**Life at Villedge**

- 0.60\* Acre Plots with 6 Village Themes
- Community Sitting Zones
- Garden & Provision for Organic Vegetation within the Plot

\*Approx. Plot Size

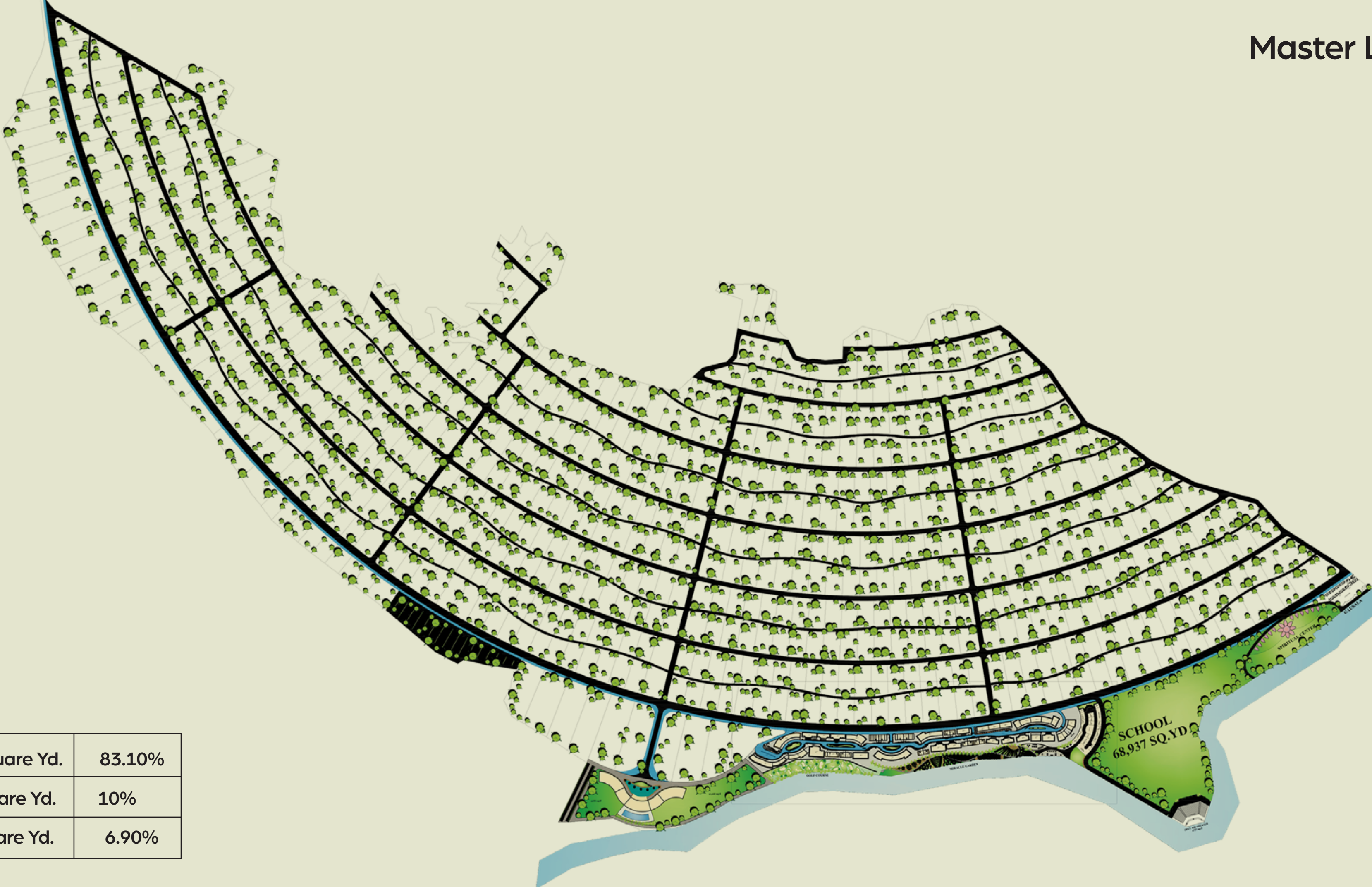


**Experience  
diversity of  
unique luxuries  
along 100 acres**

**Lifestyle at VANESA**

- International Village with Global Experiences
  - High Street Retail
- International Boarding School & Sports Complex
- Spiritual Centre with Yoga-Medi Zones & Gaushala
  - Kidzania
  - Miracle Centre
- 1 Km Aqua Experience with Venice-like, Gondola Boat Ride
  - 5 Star Hotel
  - Golf Course
- Amphitheatre & More

# Master Layout



|             |                      |        |
|-------------|----------------------|--------|
| Land Area   | 19,12,772 Square Yd. | 83.10% |
| Road        | 2,31,215 Square Yd.  | 10%    |
| Owners Land | 1,58,966 Square Yd.  | 6.90%  |

The joys of coming home to undisturbed simplicity  
make your soul dance and heart rejoice...

# Verdant Kerala





# Keralathilekku Swagatham

Amidst the emerald green acres of bliss, blossoms a reminiscent of God's own country.

A dwelling with themed villas across half acre plots fashioned around traditional Kerala-style living. Laced with banana planktons, palm trees and the smell of soil adds to its charm.

Come over, embrace a get-away that reflects sheer bliss.



PROJECT :  
 SRIYAT VILLAGE

KERELA TYPE VILLA'S LAYOUT

|          |           |         |        |
|----------|-----------|---------|--------|
| DATE     | 1/11/2011 | SCALE   | 1:1000 |
| DESIGNER | ...       | CHECKER | ...    |
| APPROVED | ...       | DATE    | ...    |





# Experience traditional intricacies of 'Nalukettu'

Grand wooden ceilings, exquisitely carved columns and magnificently ornate front door, conspire together to invite you back to verdant Kerala Life.



# Cocooned in the arms of Mother Nature

An epitome of the life in a traditional Kerala home is marked by a curved seating space on patio, courtyard with organic vegetation and more.



An aerial photograph of a tropical village. The scene is dominated by several traditional houses with steep, gabled roofs made of reddish-brown tiles. The houses are built on a lush green lawn and are surrounded by numerous palm trees and other tropical plants. A central, winding path made of light-colored paving stones runs through the village, connecting the houses. The path is bordered by low, curved walls. The overall atmosphere is peaceful and idyllic, suggesting a community that values both privacy and togetherness.

# Village with privacy; and community togetherness.

Traditional lifestyle themed in a manner that offers ample space and privacy;  
and at the same time, lets one come together with their community to indulge  
in like-minded conversations and good times.

Immerse your soul in a calling with cultural art forms, rich heritage  
& rustic charm, reminiscent of the life you yearn for...

Regale

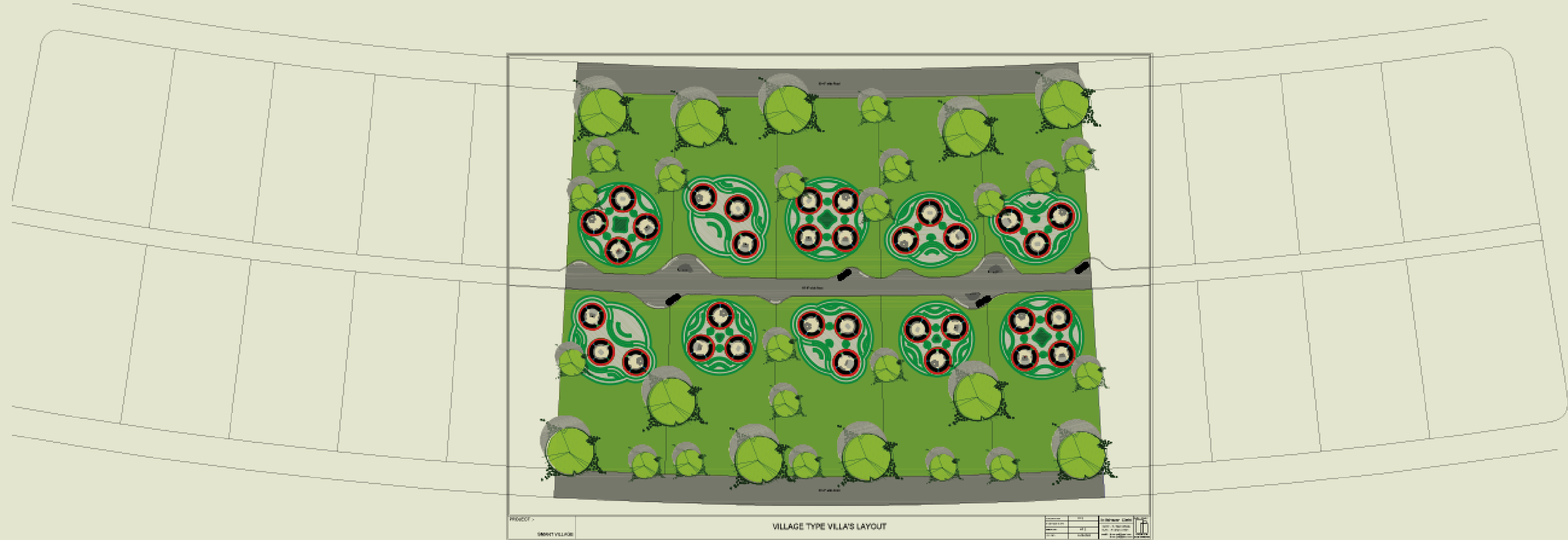
Kutch





# Asanjhe Ghare Achija

The rustic charm of Bhunga castle-like Villas here, invite the ardent Kutchi soul to embrace pure living experiences. The Kutch-themed Villa comprises a cluster of 4 large spaces, sectioned along the lines of daily activities in a manner that offers privacy with exclusivities.



# From charming mornings to soulful evenings

Villedge imbibes the old community values and habits of bringing people together at a common place. Distinct wall art and 'khatlas' further add to its traditional and cozy environment.





# The circles of life

Built as per the traditional Kutchi art of house-making called 'Bhunga', these circular villas with thatched roofs, let life come a full circle in a fulfilling way.

# A gathering that ignites the heart

The themed villas here showcase an outdoor ota having charpoys and traditional wall art, that reflect the simple-yet-social soul of Kutch.



Where an assortment of rejuvenating experiences  
transform your mind, body & senses...

# Eclectic Good

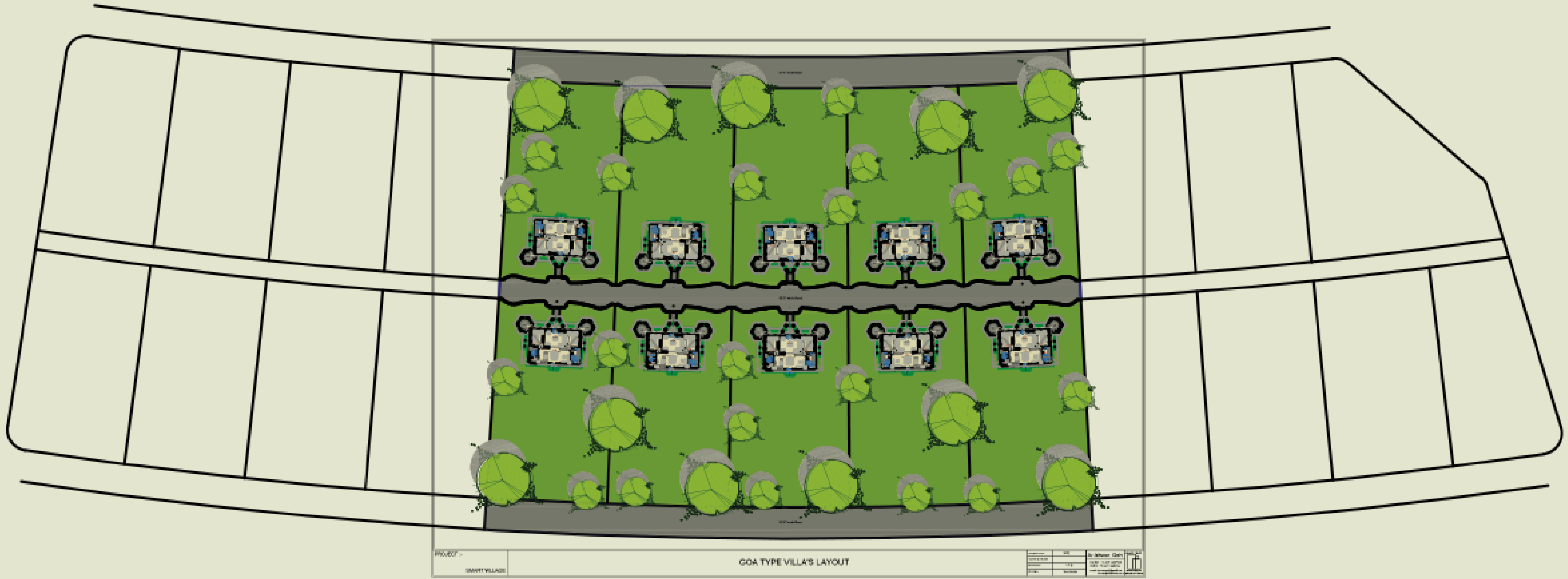




A graphic of stylized palm leaves in various shades of blue and teal, positioned on the right side of the page. The leaves are layered, with some in the foreground and others behind, creating a sense of depth. They are set against a white background that transitions into a teal background on the left.

# Raavpa yo Saayba

Welcome to your Goa away from Goa. Sea, sands, shells and a state of unwind is what makes Goa, a paradise. This potpourri of Portuguese & European Architecture is recreated in a manner that showcases Goan-themed villas complemented with a backdrop of swaying palms.



PROJECT -  
SMART VILLAGE

GOA TYPE VILLA'S LAYOUT

|           |               |
|-----------|---------------|
| Scale     | 1:1000        |
| Author    | Architect     |
| Client    | Smart Village |
| Date      | 2023          |
| Sheet No. | 01            |

# Let the old Goan charm mesmerise you

The Portuguese-style villas nestled amongst palm trees are your realm of quietude with a colourful character. These bright-coloured villas comprise curved fencings on either sides, and a warm-inviting curved porch.



# Marked by magical villas and quaint lanes

The hexagonal structures on the sides are the Balcao - an open patios for shade from rain and sunlight. Also the most celebrated space for fam-jams and cherish memorable times. Truly, your gateway to a blissful Goan sojourn.



Artistic excellence & exquisite craftsmanship beckon you  
to the land with rich cultural fabric...

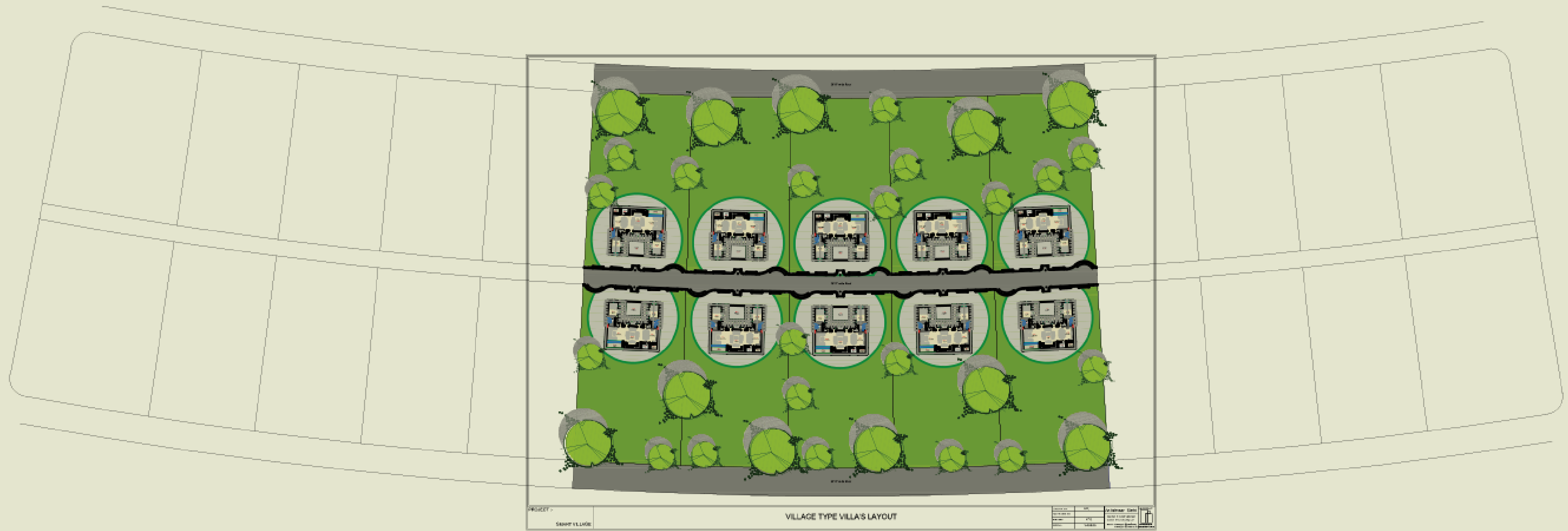
# Splendid Marwar





# Khamma Ghani

An opulent tradition of art and architecture is portrayed in these Marwar abodes that complement the land's princely ethos. Combined with warm welcomes and traditional delicacies, these culturally-rich interiors are a haven of colours, smiles and valour.



PROJECT -  
SAHAR VILLAGE

VILLAGE TYPE VILLA'S LAYOUT

|            |        |              |     |
|------------|--------|--------------|-----|
| Scale:     | 1:1000 | Author:      | ... |
| Date:      | ...    | Client:      | ... |
| Sheet No.: | ...    | Project No.: | ... |
| Scale:     | ...    | Project No.: | ... |

# A celebration of pride and regal demeanour

Suggestive of royal 'havelis', the homes are artistically created with a large courtyard. The embellished interiors and facades reflect a sense of pride and valour, with mythological and, occasionally, historical episodes.







# Fashioned by keeping family and community gatherings, in mind

Close knitted with their community, Marwar Villedge flaunts a sitting area amidst the openness and serenity, with a regal shekhawati soul.

# The luxury of enjoying life's simplicities

A combination of ethnic homes display well-done, extravagant chambers with outside verandas, typical wall structures and sitting areas that let you enjoy natural pleasures at the Villedge.



Floral meadows merge Victorian-styled architecture to create a picture perfect backdrop, reflecting the land's poise & culture...

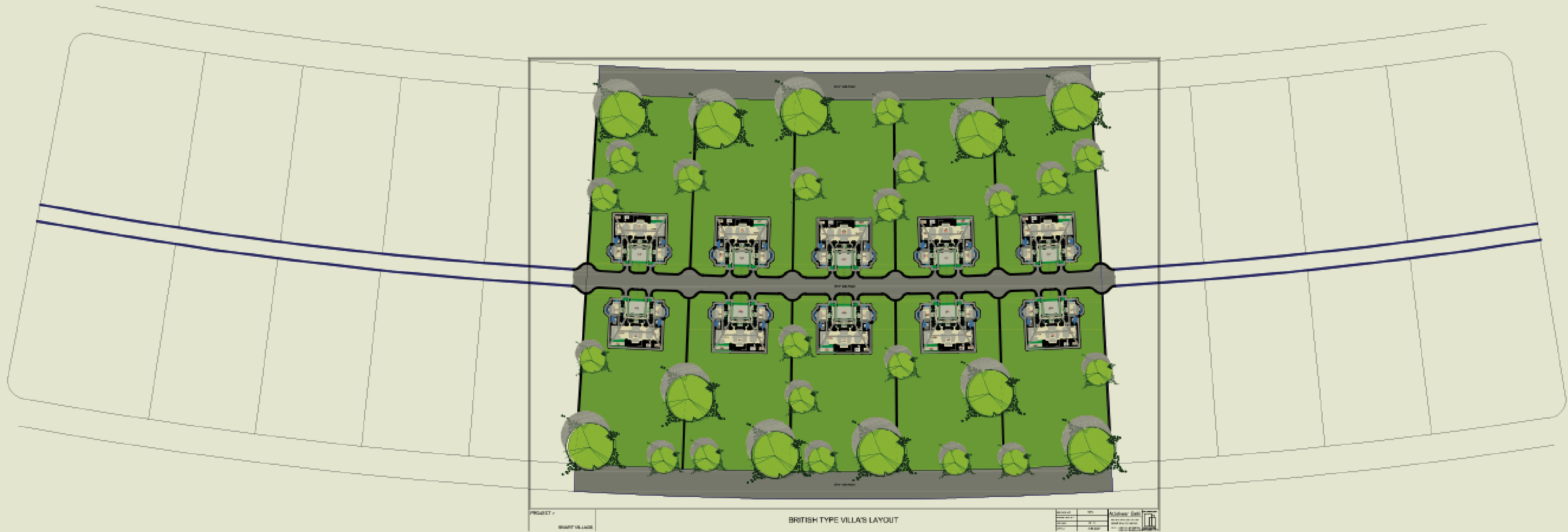
# Enticing Britain





# Welcome Home

An English village or a fairytale town? It is a question that casts a spell on every visitor of Villedgestepping into the Britain-themed colony of Stone Mansions. This space is a canvas where time has vividly sketched Europe's colonial era.



PROJECT :  
SHARF VILLAGE

BRITISH TYPE VILLA'S LAYOUT

|            |            |              |                   |
|------------|------------|--------------|-------------------|
| Scale:     | 1:500      | Author:      | Engr. H. G. G. G. |
| Date:      | 2011/01/01 | Client:      | SHARF VILLAGE     |
| Sheet No.: | 1/1        | Project No.: | SHARF VILLAGE     |



# Canvas of classic style and elegant hues

The spacious stone-built mansions are characterized by cast-iron gates, terracotta tiles, white-painted woodwork, bay sash windows, and Mansard roof with windows.



# Like masterpieces of Timelessness out of fairytale living

The floral garden in the front and the stone mansion surrounded by tall deodars and birchwood trees lend an invitation to live a life like a Victorian Duke & Duchess.



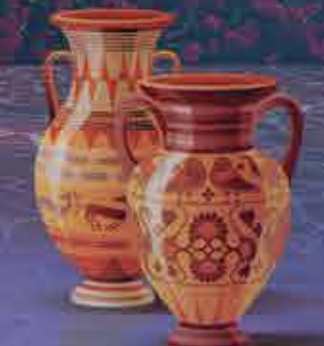
# A colony that exudes a class & style of its own

Before the Victorian era, most houses flaunted one color i.e. usually white or beige. By 1887, bright earth tones like burnt sienna and mustard yellow came in vogue to flaunt a community that was vibrant and classic, at the same time.



Savour the brilliance of Greek architecture; a fusion of colours, aesthetics & forms set amidst serene, open vistas...

# Ornamental Greece





# Kalós írthate sto spíti stin Elláda

Blue and white villas crowned with domes, teleport you to Greece, right here in Surat – the savannah of Gujarat. These greek-themed villas exhibit a commanding Aegean character built with spacious ground level comprising large rooms and a grand patio in the middle.



# True to Santorini's Blue-white vistas

Curved galleries that extend outside each villa are ornamented with floral display – a living example of Neo-classical architecture.



An aerial photograph of a residential development. The houses are white with bright blue accents, including domes on the roofs and window frames. They are arranged in a row, separated by a central stone-paved walkway. The surrounding area is lush with green grass, trees, and flowering plants. The lighting is bright, suggesting a sunny day.

# Live like a tru-blu Greek god

The green-baize backyard ornamented with Greek flora is your canvas to live a simple-yet-celebrated life like a tru-blu Greek God.

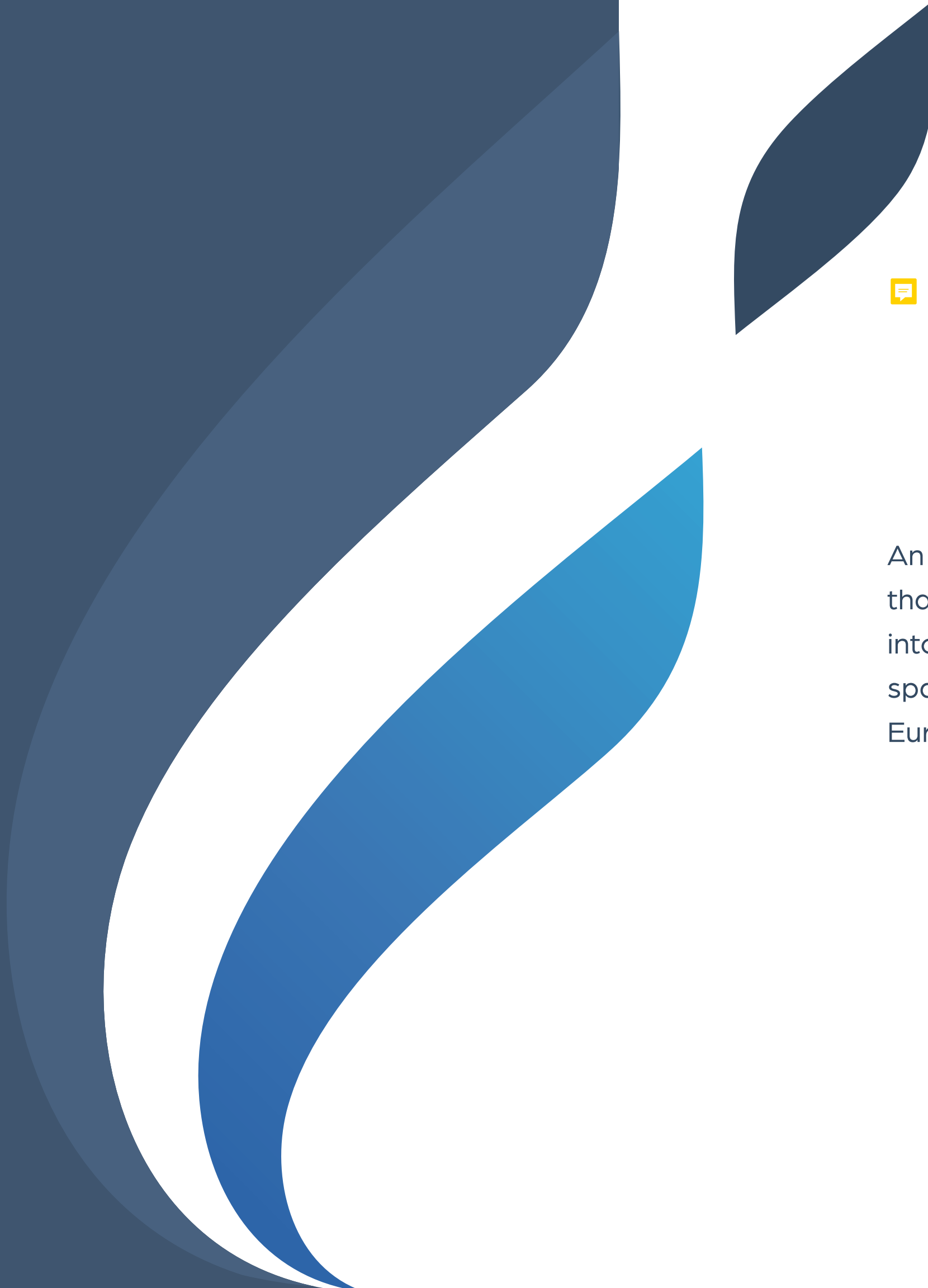
Buzzing zones, high spirits and lifestyle global experiences  
come together across a unique international villedge

# Vivid Vanessa





# Retail

A large, abstract graphic composed of several overlapping, curved shapes in various shades of blue (dark blue, medium blue, and light blue) and white, resembling a stylized letter or a decorative element. It is positioned on the left side of the page, partially overlapping the dark blue background.

An English village or a fairytale town? It is a question that casts a spell on every visitor of Villedgestepping into the Britain-themed colony of Stone Mansions. This space is a canvas where time has vividly sketched Europe's colonial era.



# An oasis of global luxury brands & designer labels

India's First 'Crème de la Crème' Retail Outlet  
featuring the very best of international brands





This is   
dummy copy  
do not read  
do not  
read it

India's First 'Crème de la Crème' Retail Outlet   
featuring the very best of international brands

An architectural rendering of a modern waterfront development. The scene features a central canal with a gondola boat ride. On the left, a large building with a prominent wooden frame and a balcony is visible. On the right, a row of shops with modern facades, including one named 'A'LEORL', is shown. In the foreground, several people are sitting at outdoor tables, enjoying the view. The sky is clear and blue, and the overall atmosphere is bright and inviting.

# This is dummy copy do not read it

1 Kilometer Long, Venice-feel Aqua Canal with Gondola Boat Ride

An aerial view of a modern shopping mall featuring a central canal with a boat ride. The mall has a wooden roof structure and various shops like KFC, Jumbo, and Magnum Ice Cream. The canal is lined with lush greenery and flowers, and a small boat with three people is on the water. The scene is set during sunset or sunrise, with warm lighting.

# A venice-like boat ride within your villedge

1 Kilometer Long, Venice-feel Aqua Canal with Gondola Boat Ride



# Hospitality

An English village or a fairytale town? It is a question that casts a spell on every visitor of Villedgestepping into the Britain-themed colony of Stone Mansions. This space is a canvas where time has vividly sketched Europe's colonial era.



# Embrace the grandeur of 5 star hospitality

- 5 Star Hotel with 200 to 250 Guest Rooms
- Banquet Hall for Destination Events
- Fine Dines, Bistros & More



# This is dummy copy do not read it

- 5 Star Hotel with 200 to 250 Guest Rooms
- Banquet Hall for Destination Events
- Fine Dines, Bistros & More

Wow factor extends  
beyond to create an  
international environment





# Spiritual center

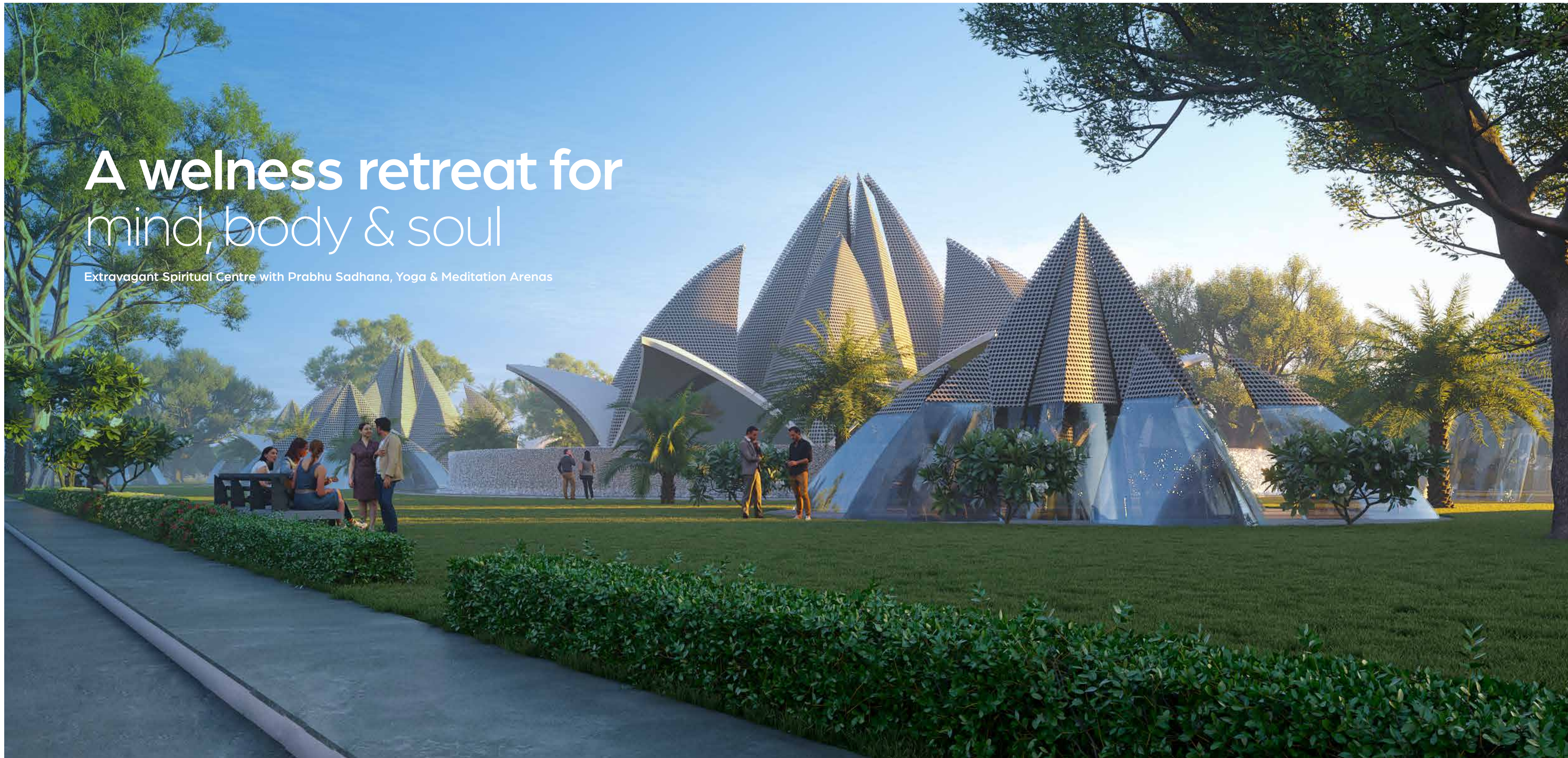


An English village or a fairytale town? It is a question that casts a spell on every visitor of Villedgestepping into the Britain-themed colony of Stone Mansions. This space is a canvas where time has vividly sketched Europe's colonial era.



# A wellness retreat for mind, body & soul

Extravagant Spiritual Centre with Prabhu Sadhana, Yoga & Meditation Arenas



# This is dummy copy do not read it

Extravagant Spiritual Centre with Prabhu Sadhana, Yoga & Meditation Arenas





# Other activities



An English village or a fairytale town? It is a question that casts a spell on every visitor of Villedgestepping into the Britain-themed colony of Stone Mansions. This space is a canvas where time has vividly sketched Europe's colonial era.

# Encouraging all-round development for gen-next

- Kidzania KidCity
- Kidzania Small KidsTown
- International Boarding School
- High-End Sports Complex



# Feel the bliss of skies, greens & earth

- Miracle Garden
- Golf Course
- Open-to-air Amphitheatre
- Gaushala

